

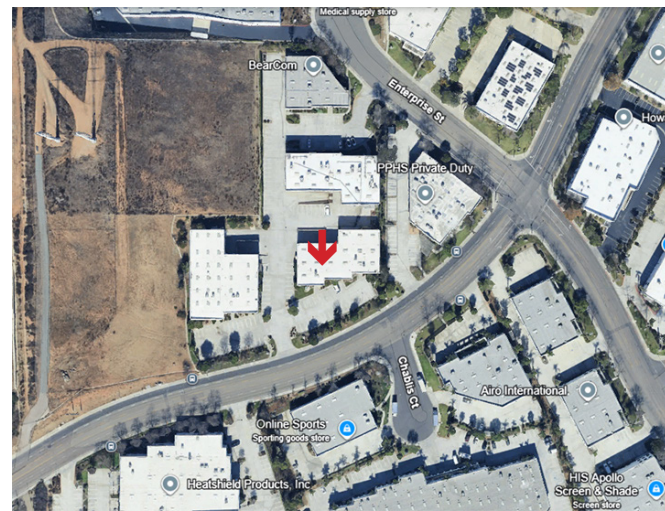
FOR LEASE

1011 S. ANDREASEN DR., SUITE 100, ESCONDIDO, CA



PROPERTY DETAILS

- An Approximate 7,960 SF Industrial Suite
- Approximately 1,902 SF of Well-Appointed Office
- 1,902 SF of Mezzanine
- Generous Window Line and Natural Light
- Clear Height – Approximately 18' in Warehouse
- Dock Loading and 2 Grade Roll-up Doors
- Gas Stubbed to Building
- Heavy Power – 600 Amps 277/480v - 3 Phase Power
- Ample Parking Onsite and Street



LEASE RATE - \$9,895 NNN PER MONTH

SAN DIEGO COMMERCIAL

TIM CLEPPER - PRESIDENT
380 S. MELROSE DR., SUITE 367, VISTA, CA 92081
TIM@SANDIEGOCOMMERCIAL.INFO
WWW.SANDIEGOCOMMERCIAL.INFO
CA DRE BROKER #: 01354303
C: 760.402.4846