

# FOR LEASE

**6189 EL CAMINO REAL, SUITES 101 - 201, CARLSBAD CA**



## PROPERTY DETAILS

- Approximately 9,800 SF High Image Flex Space
- Approximately 6,000 SF of Warehouse with Dock Loading
- Minimum 22' Clear Height
- Gas Available
- 2 Separate Meters: 120/208v and 277/408v
- Parking: 3.26/1,000
- Located Directly Off El Camino Real with Close Proximity to Interstate 5
- Large Corporate Neighboring Firms
- Space Includes Reception, Conference Room, and Numerous Private Offices
- Extensive Glass Lines
- Pre-Wired Phone & Internet

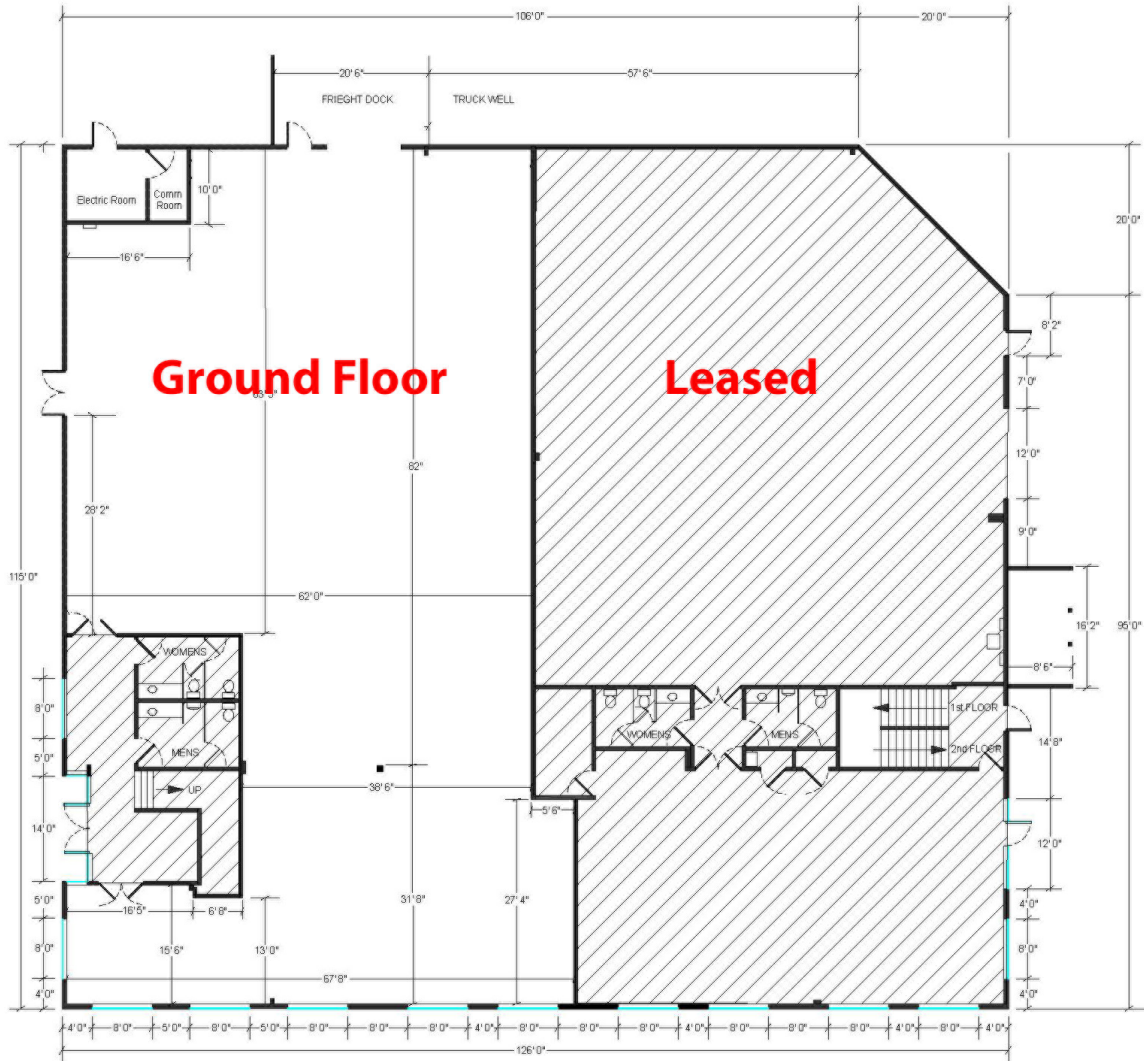
**LEASE RATE - \$1.60 PSF/MONTH/GROSS**

**SAN DIEGO COMMERCIAL**

**TIM CLEPPER - PRESIDENT**  
380 S. MELROSE DR., SUITE 367, VISTA, CA 92081  
TIM@SANDIEGOCOMMERCIAL.INFO WWW.SANDIEGOCOMMERCIAL.INFO  
CA BROKER #: 01354303  
C: 760.402.4846 T: 760.599.4200 F: 760.599.4344

# FOR LEASE

## 6189 EL CAMINO REAL, SUITES 101 - 201, CARLSBAD CA FLOOR PLAN



**LEASE RATE - \$1.60 PSF/MONTH/GROSS**

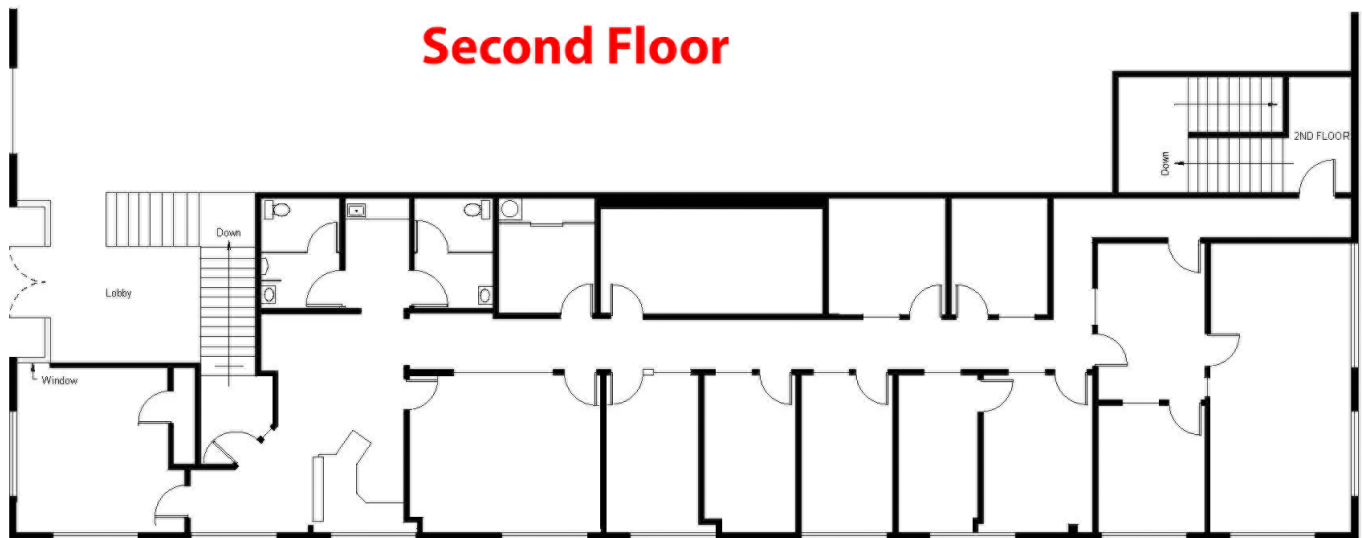
**SAN DIEGO COMMERCIAL**

**TIM CLEPPER - PRESIDENT**  
380 S. MELROSE DR., SUITE 367, VISTA, CA 92081  
TIM@SANDIEGOCOMMERCIAL.INFO WWW.SANDIEGOCOMMERCIAL.INFO  
CA BROKER #: 01354303  
C: 760.402.4846 T: 760.599.4200 F: 760.599.4344

# FOR LEASE

**6189 EL CAMINO REAL, SUITES 101 - 201, CARLSBAD CA**

## FLOOR PLAN



**LEASE RATE - \$1.60 PSF/MONTH/GROSS**

**SAN DIEGO COMMERCIAL**

**TIM CLEPPER - PRESIDENT**  
380 S. MELROSE DR., SUITE 367, VISTA, CA 92081  
TIM@SANDIEGOCOMMERCIAL.INFO WWW.SANDIEGOCOMMERCIAL.INFO  
CA BROKER #: 01354303  
C: 760.402.4846 T: 760.599.4200 F: 760.599.4344