



For Sale | 20,705 sf
Freestanding Industrial Building
1955 Kellogg Ave Carlsbad, CA 92008

For Sale | 20,705 sf 1955 Kellogg Ave Carlsbad, CA

SAN DIEGO COMMERCIAL



20,705 SF

Situated on a 1.488 acre parcel

Freestanding industrial building

80% warehouse 20% office split

Five grade level doors

All concrete drive and parking

West facing functional windows
in warehouse

Property Highlights

Sale Price
\$6,730,000

Built 1995

50 parking spaces

Adjacent to Palomar Airport

5 restrooms 1 private shower

Minimum 22" clear height

Steel constructed bonus mezzanine

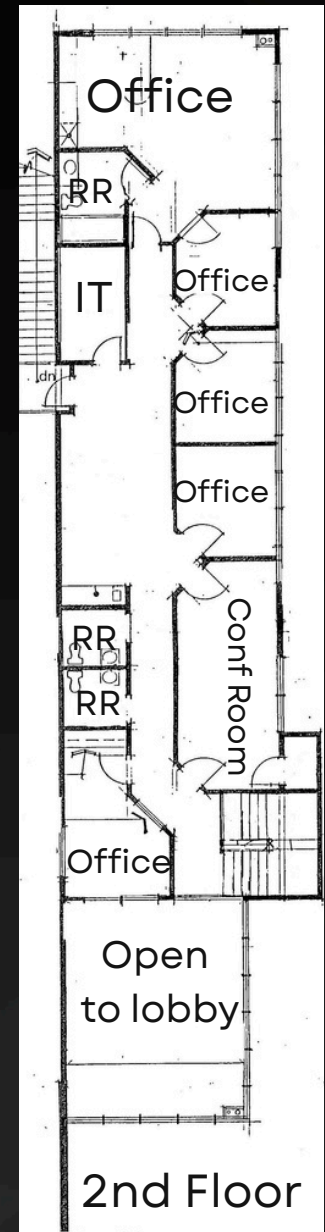
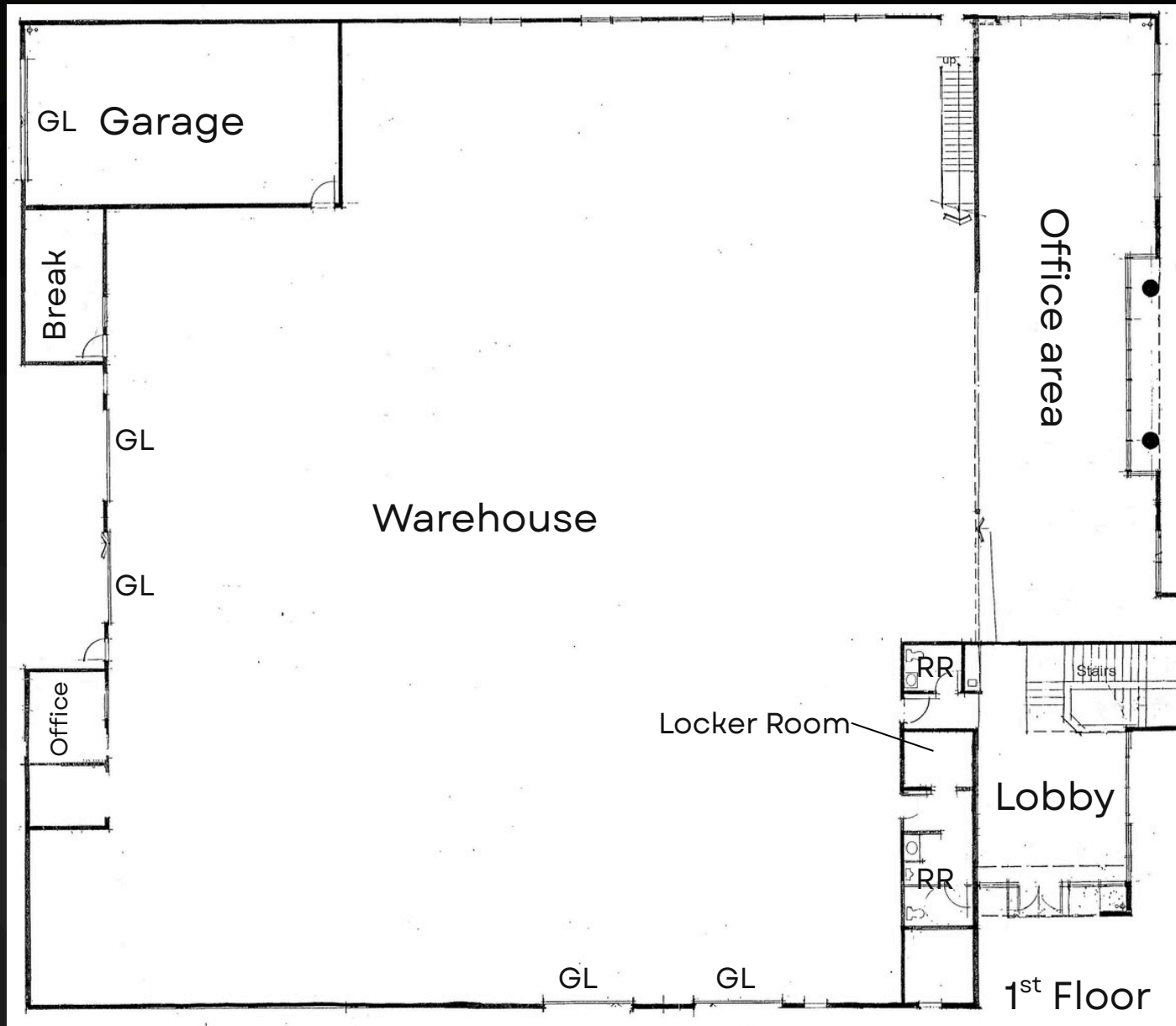
Heavy power:
2000 Amp 477/280 Volt 3 Phase

No warranty or representation is made to the accuracy of the foregoing information. Terms of sale, lease and availability are subject to change or withdrawal without notice.

For Sale | 20,705 sf
1955 Kellogg Ave Carlsbad, CA

SAN DIEGO COMMERCIAL

Floor Plan



For Sale | 20,705 sf 1955 Kellogg Ave Carlsbad, CA

SAN DIEGO COMMERCIAL



No warranty or representation is made to the accuracy of the foregoing information. Terms of sale, lease and availability are subject to change or withdrawal without notice.

For Sale | 20,705 sf 1955 Kellogg Ave Carlsbad, CA

SAN DIEGO COMMERCIAL



No warranty or representation is made to the accuracy of the foregoing information. Terms of sale, lease and availability are subject to change or withdrawal without notice.

For Sale | 20,705 sf 1955 Kellogg Ave Carlsbad, CA

SAN DIEGO COMMERCIAL



San Diego Commercial
380 S. Melrose Dr. Ste 367
Vista, CA 92081
DRE #01900267
www.sandiegocommercial.info

Russ Jabara
Vice President
760.822.4851
DRE #01315296
russ@sandiegocommercial.info

Shaun Espino
Sr. Associate
760.208.4506
DRE #01505130
shaun@sandiegocommercial.info