

FOR LEASE

2453 CADES WAY, SUITE D, VISTA, CA



**OAK RIDGE
BUSINESS CENTER**

PROPERTY DETAILS

- An Approximate 5,100 Industrial Suite with 2,800 SF of Bonus Mezzanine
- 80% Office with Lab and Production Space
- Clear Height: 20'-22'
- Sprinklers
- Power: 200 AMPS, 208V, 3-Phase
- Grade Level Loading with Drive Around
- Skylights and Solar Cool Roof
- Quiet Location at the end of a Cul-De-Sac
- Owner Will Demo a Majority of Office Space To Tenants Specifications
- The Adjacent 4,200 SF Is Available
- CAM \$.17 PSF
- Excellent Location with Easy Access to 78 Freeway and Palomar Airport Road

LEASE RATE - \$1.60 PSF MG

SAN DIEGO COMMERCIAL

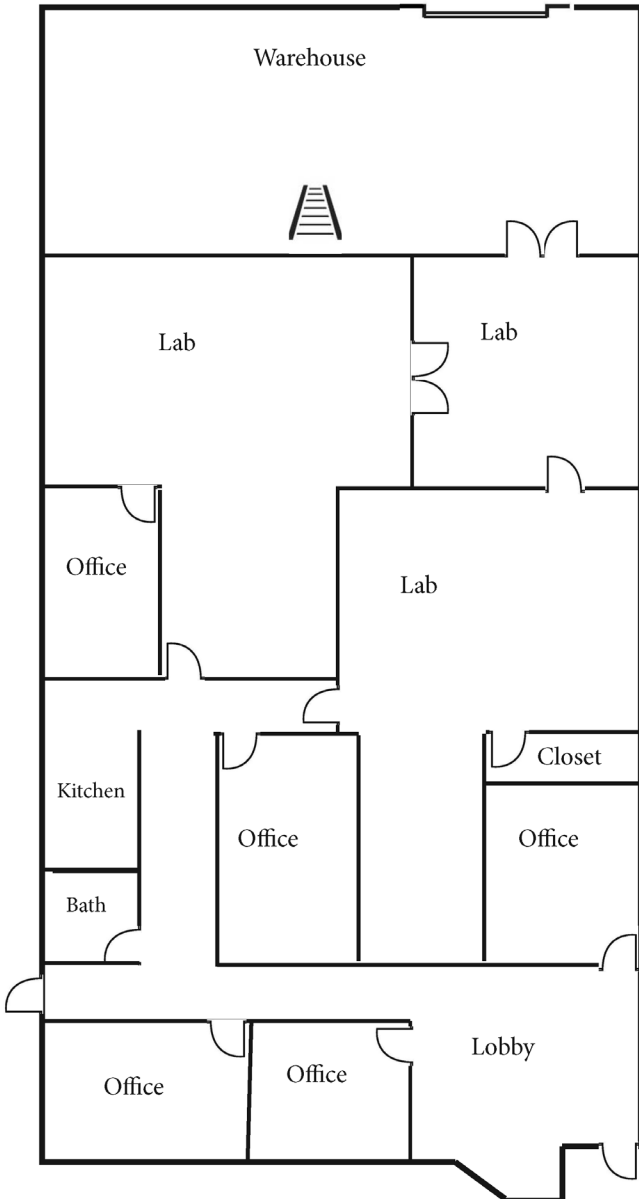
TIM CLEPPER - PRESIDENT
380 S. MELROSE DR., SUITE 367, VISTA CA 92081
TIM@SANDIEGOCOMMERCIAL.INFO
WWW.SANDIEGOCOMMERCIAL.INFO
CA DRE BROKER LICENSE #: 01354303
C: 760.402.4846 T: 760.599.4200 F: 760.599.4344

FOR LEASE

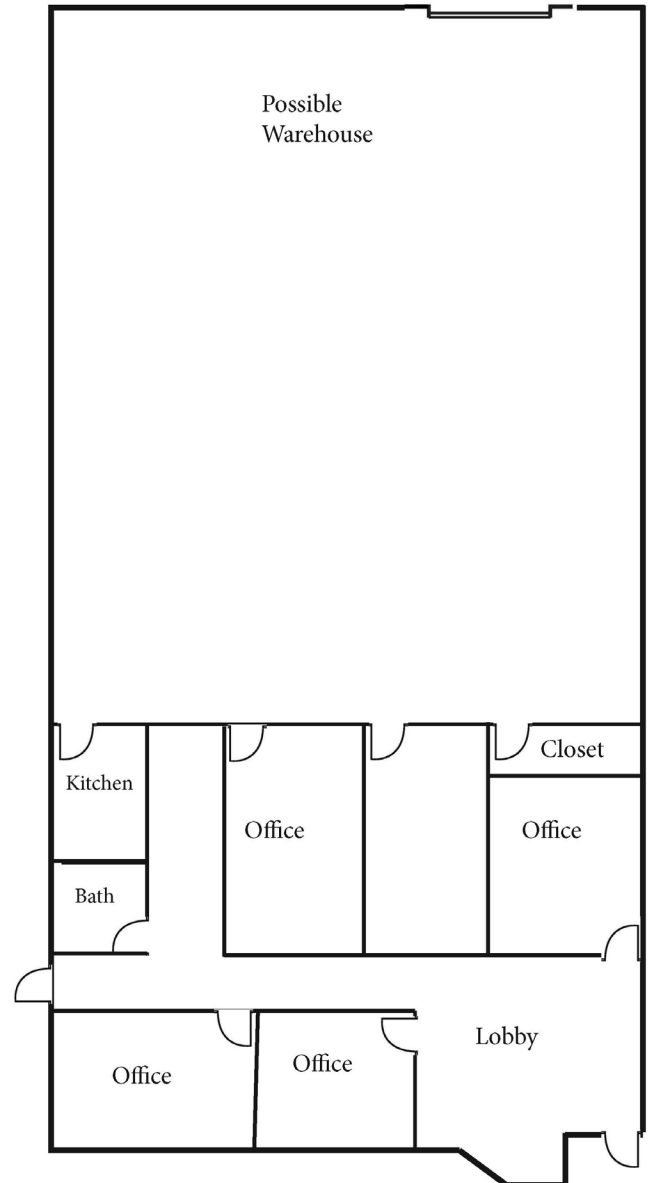
2453 CADES WAY, SUITE D, VISTA, CA

FLOOR PLAN

ACTUAL FLOOR PLAN



CONCEPTUAL FLOOR PLAN



LEASE RATE - \$1.60 PSF MG

SAN DIEGO COMMERCIAL

TIM CLEPPER - PRESIDENT
380 S. MELROSE DR., SUITE 367, VISTA CA 92081
TIM@SANDIEGOCOMMERCIAL.INFO
WWW.SANDIEGOCOMMERCIAL.INFO
CA DRE BROKER LICENSE #: 01354303
C: 760.402.4846 T: 760.599.4200 F: 760.599.4344

FOR LEASE

2453 CADES WAY, SUITE D, VISTA, CA



Oak Ridge Business Center is located in North San Diego County in the heart of Vista. This project sits at the end of a quiet cul-de-sac with an nice ocean breeze and numerous shops and restaurants near by. The project is centrally located between I-5 and I-15 Freeways which are easily accessible from 78 Freeway.

LEASE RATE - \$1.60 PSF MG

SAN DIEGO COMMERCIAL

TIM CLEPPER - PRESIDENT
380 S. MELROSE DR., SUITE 367, VISTA CA 92081
TIM@SANDIEGOCOMMERCIAL.INFO
WWW.SANDIEGOCOMMERCIAL.INFO
CA DRE BROKER LICENSE #: 01354303
C: 760.402.4846 T: 760.599.4200 F: 760.599.4344