

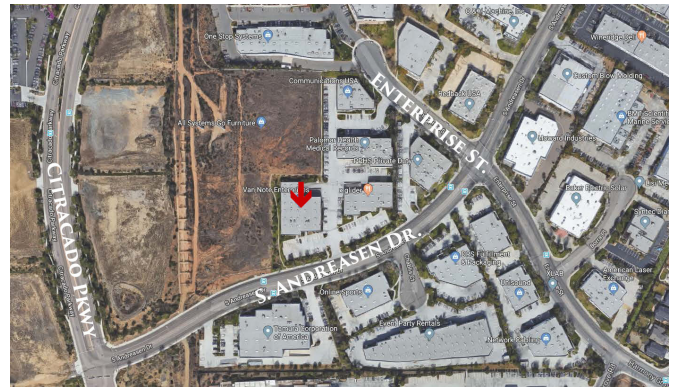
# LEASED

**1031 S. ANDREASEN DR., SUITE 100, ESCONDIDO, CA**



## PROPERTY DETAILS

- An Approximate 8,800 SF Industrial Suite  
(1st Floor 7,060 SF -2nd Floor 1,740 SF)
- Approximately 1,740 SF of Well-Appointed Office
- Generous Window Line and Natural Light
- Clear Height – Approximately 23' in Warehouse
- Dock and Grade Loading
- 480v - 3 Phase Power with Good Distribution
- Ample Parking
- Represented Landlord



**SAN DIEGO COMMERCIAL**

**TIM CLEPPER - PRESIDENT**  
380 S. MELROSE DR., SUITE 367, VISTA, CA 92081  
TIM@SANDIEGOCOMMERCIAL.INFO  
WWW.SANDIEGOCOMMERCIAL.INFO  
CA BRE BROKER #: 01354303  
C: 760.402.4846 T: 760.599.4200 F: 760.599.4344