

# FOR LEASE

2449 CADES WAY, SUITE D, VISTA, CA



## PROPERTY DETAILS

- An Approximate 4,200 SF Industrial Suite
- 2 Restrooms
- Balance Warehouse
- 100% Climate Controlled
- 2" Gas Service
- Outdoor Patio Area in Front
- Previously Approved For Public Occupancy
- Power: 200 AMPS, 208v, 3-Phase
- Skylights and New Solarcool Roof
- Drive Around Access
- Excellent Location with Easy Access to 78 Freeway and Palomar Airport Road

**LEASE RATE - \$1.60 PSF MG + CAM**

**SAN DIEGO COMMERCIAL**

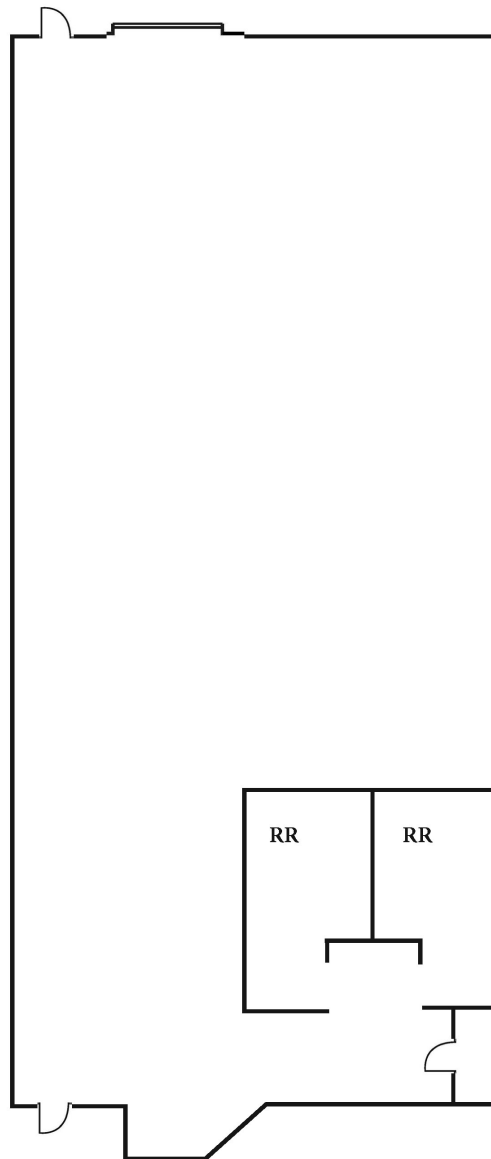
TIM CLEPPER - PRESIDENT  
380 S. MELROSE DR., SUITE 367, VISTA CA 92081  
TIM@SANDIEGOCOMMERCIAL.INFO  
WWW.SANDIEGOCOMMERCIAL.INFO  
CA DRE BROKER LICENSE #: 01354303  
C: 760.402.4846 T: 760.599.4200 F: 760.599.4344

# FOR LEASE

2449 CADES WAY, SUITE D, VISTA, CA

## FLOOR PLAN

SUITE D  
4,200 SF



**LEASE RATE - \$1.60 PSF MG + CAM**

**SAN DIEGO COMMERCIAL**

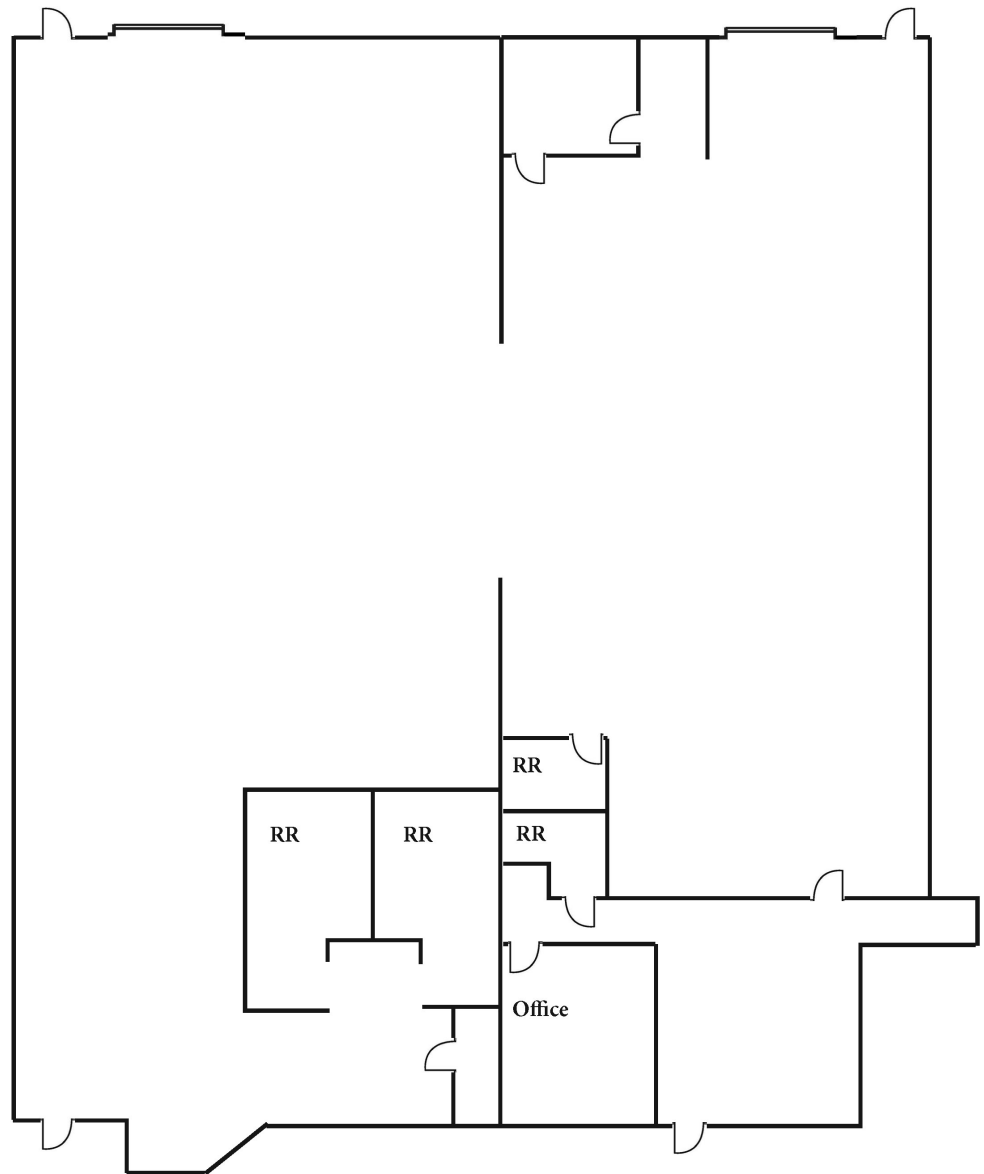
TIM CLEPPER - PRESIDENT  
380 S. MELROSE DR., SUITE 367, VISTA CA 92081  
TIM@SANDIEGOCOMMERCIAL.INFO  
WWW.SANDIEGOCOMMERCIAL.INFO  
CA DRE BROKER LICENSE #: 01354303  
C: 760.402.4846 T: 760.599.4200 F: 760.599.4344

# FOR LEASE

**2449 CADES WAY, SUITE D, VISTA, CA**

**SUITE D CAN BE COMBINED WITH ADJACENT UNIT  
FOR A TOTAL OF APPROXIMATELY 8,400 SF**

**CONCEPTUAL  
FLOOR PLAN**



**LEASE RATE - \$1.60 PSF MG + CAM**

**SAN DIEGO COMMERCIAL**

**TIM CLEPPER - PRESIDENT**  
380 S. MELROSE DR., SUITE 367, VISTA CA 92081  
TIM@SANDIEGOCOMMERCIAL.INFO  
WWW.SANDIEGOCOMMERCIAL.INFO  
CA DRE BROKER LICENSE #: 01354303  
C: 760.402.4846 T: 760.599.4200 F: 760.599.4344