

LEASED

1943 AVENIDA PLAZA REAL OCEANSIDE, CA



FREESTANDING INDUSTRIAL BUILDING
SECURED FENCED STORAGE YARD

PROPERTY DETAILS

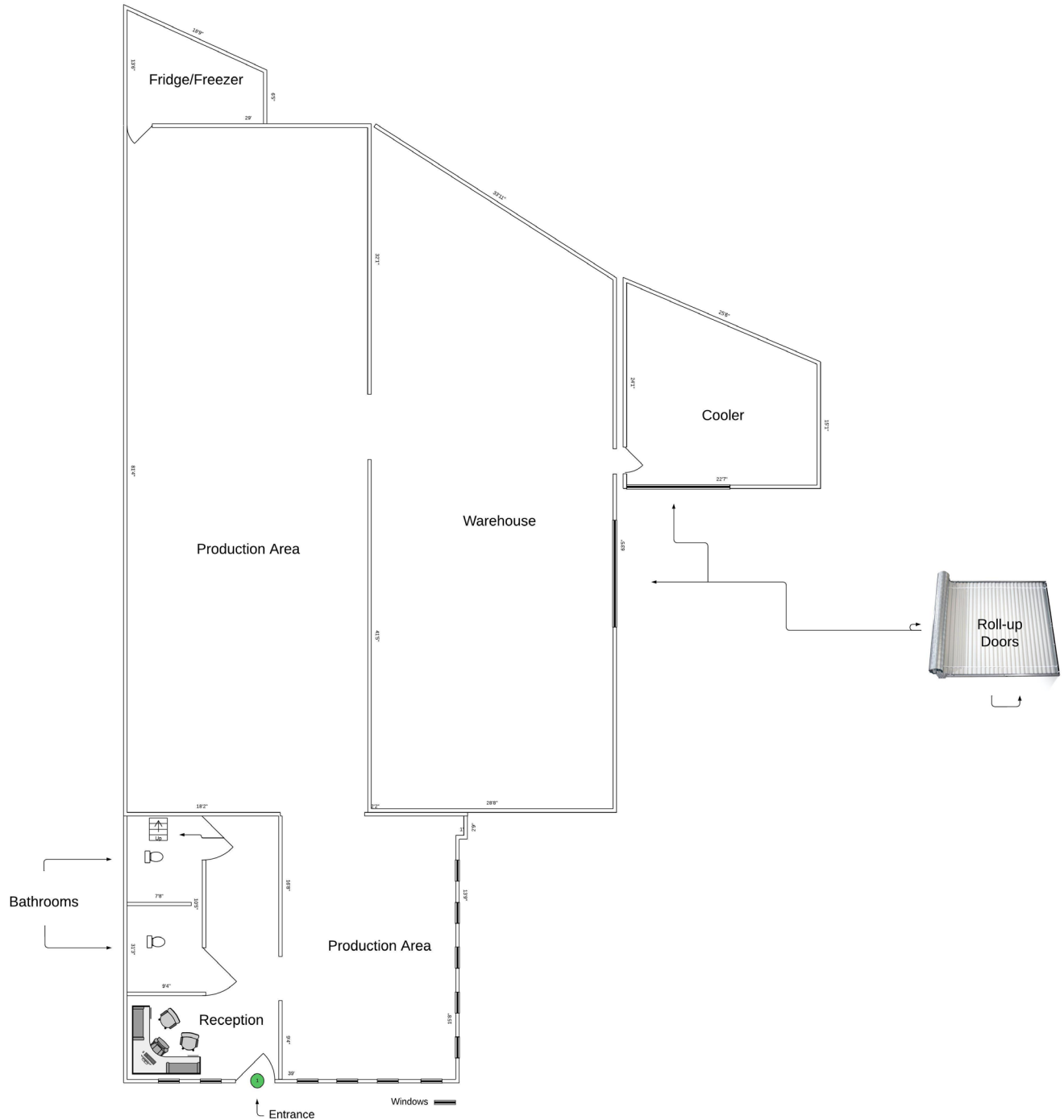
- An Approximate 5,900 SF Industrial Building
- Approximately 780 SF of Bonus Square Footage
- Quality Office Improvements with Extensive Glass Line
- .28 Acre Parcel with Fenced Yard and Electric Gate
- One 12' x 14' Grade Door
- Clear Height: 16'
- Power: 400 amp/120 - 208v 3 Phase
- Gas Service
- Extensive Solar Improvements on Roof
- Represented Landlord and Tenant



TIM CLEPPER - PRESIDENT
380 S. MELROSE DRIVE, SUITE 367, VISTA, CA 92081
TIM@SANDIEGOCOMMERCIAL.INFO WWW.SANDIEGOCOMMERCIAL.INFO
CA DRE BROKER LICENSE #: 01354303
C: 760.402.4846 T: 760.599.4200 F: 760.599.4344

SAN DIEGO COMMERCIAL

FLOOR PLAN



TIM CLEPPER - PRESIDENT
380 S. MELROSE DRIVE, SUITE 367, VISTA, CA 92081
TIM@SANDIEGOCOMMERCIAL.INFO WWW.SANDIEGOCOMMERCIAL.INFO
CA DRE BROKER LICENSE #: 01354303
C: 760.402.4846 T: 760.599.4200 F: 760.599.4344

SAN DIEGO COMMERCIAL