

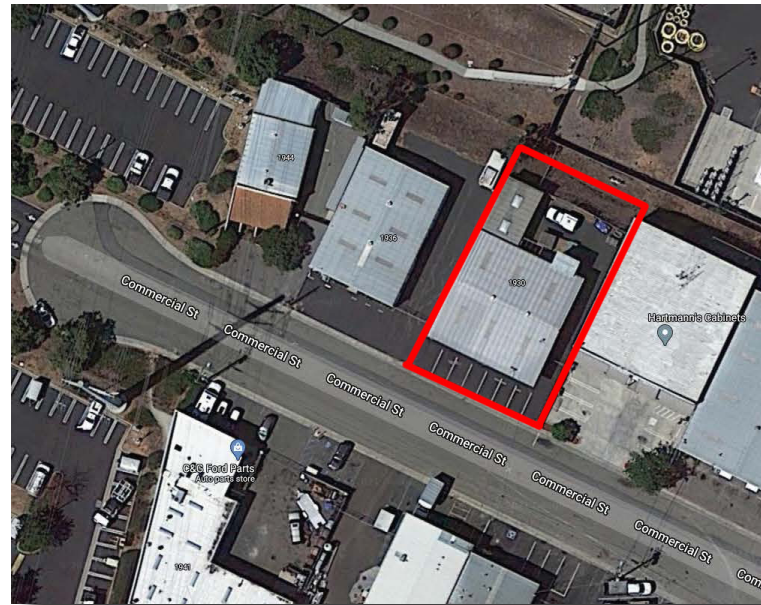
LEASED

1930 COMMERCIAL STREET, ESCONDIDO, CA



PROPERTY DETAILS

- An Approximate 3,600 SF Building Situated on an Approximate 11,000 SF Parcel
- Approximately 600 SF of Office
- Two Opposing 12'x12' Grade Doors
- Power - 200 amps/120-208v, 3-Phase
- Gas Stubbed to Building
- Fenced Yard and Parking
- Rare M1 Zoning Allows for Outside Storage of Equipment and Materials
- Represented Landlord and Tenant



TIM CLEPPER - PRESIDENT
TIM@SANDIEGOCOMMERCIAL.INFO
CA DRE BROKER LICENSE #: 01354303
C: 760.402.4846 T: 760.599.4200

SAN DIEGO COMMERCIAL

SHAUN ESPINO - SENIOR ASSOCIATE
SHAUN@SANDIEGOCOMMERCIAL.INFO
CA DRE SALES LICENSE #: 01505130
C: 760.208.4506

WWW.SANDIEGOCOMMERCIAL.INFO