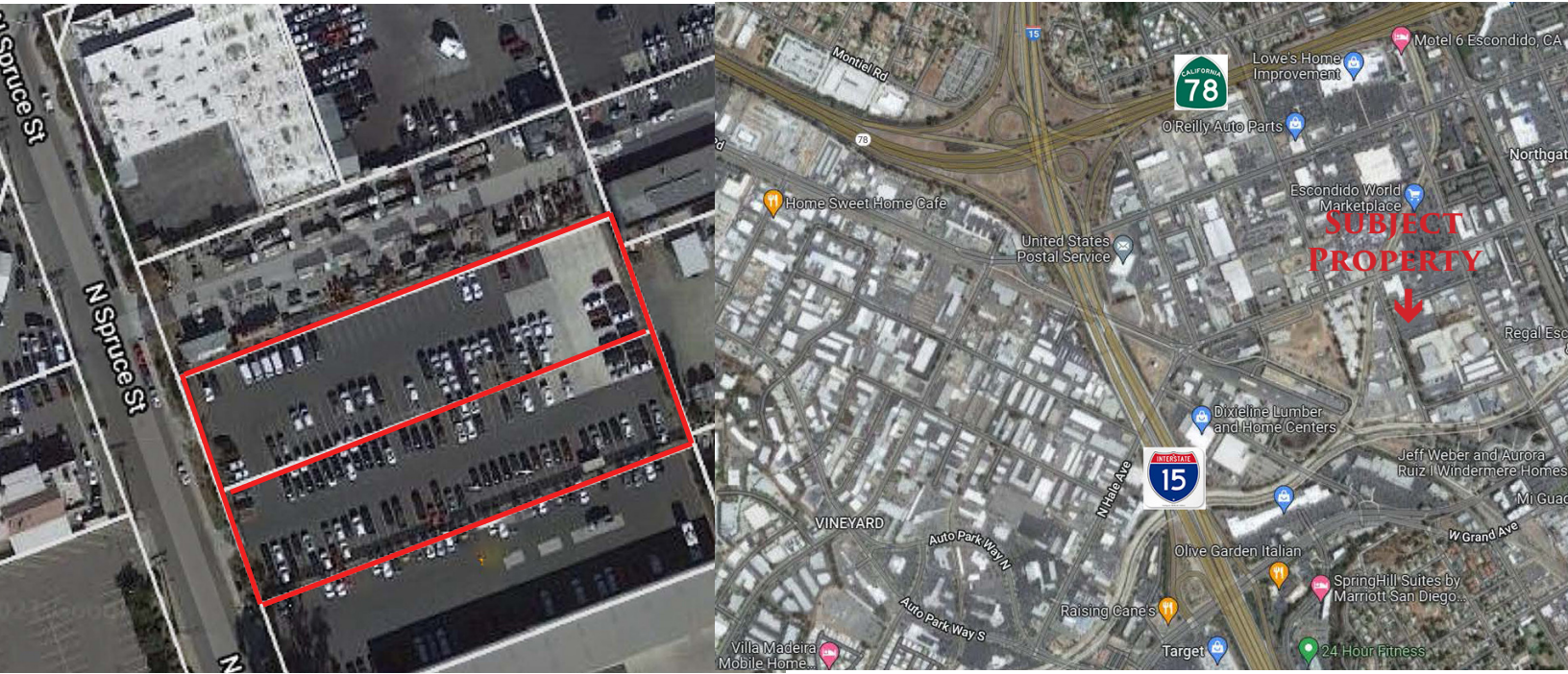


JUST LEASED

530 N. SPRUCE STREET, ESCONDIDO, CA



PROPERTY DETAILS

- 2 Parcels Totaling Approximately 1.74 Acres - APN: 232-091-36 & 232-091-37
- Fully Paved and Fenced With Outdoor Lighting Throughout
- Terrific Access to 78 Freeway & Interstate 15
- Rare M-1 Zoning Allows for a Wide Variety of Uses to Include Outside Storage of Vehicles, Materials and Equipment
- Executed Long-Term Lease with Roofing Supply Company
- Represented Landlord

SAN DIEGO COMMERCIAL

TIM CLEPPER - PRESIDENT
380 S. MELROSE DR., SUITE 367, VISTA, CA 92081
TIM@SANDIEGOCOMMERCIAL.INFO
WWW.SANDIEGOCOMMERCIAL.INFO
CA BROKER #: 01354303
C: 760.402.4846 T: 760.599.4200 F: 760.599.4344