

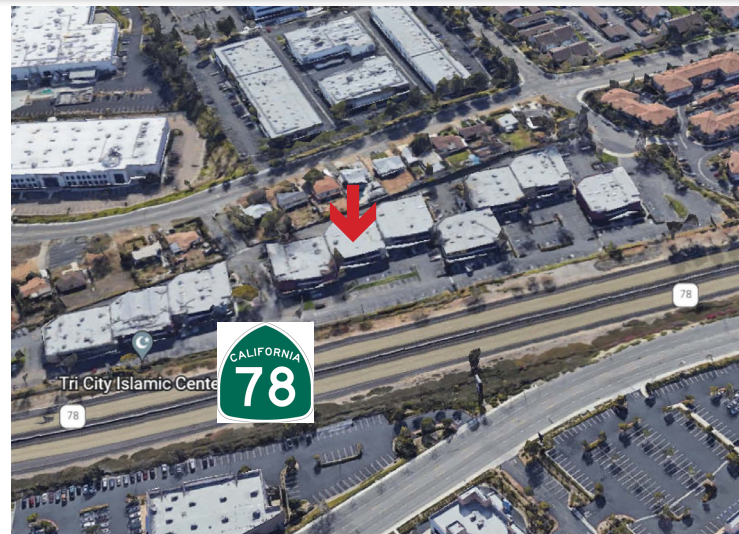
PRELIMINARY ANNOUNCEMENT FOR SALE OR LEASE

2135 INDUSTRIAL COURT, VISTA, CA



PROPERTY DETAILS

- An Approximate 11,278 SF Industrial Building
- Approximate 3,947 SF Office
- 20' Clear Height
- Grade Loading to Warehouse
- Heavy Power
- Terrific Signage & Visibility
- Current Lease Expires June 30, 2023
- Tour by Appointment Only



CONTACT BROKER FOR SALE PRICE
LEASE RATE - \$12,500 NNN PER MONTH

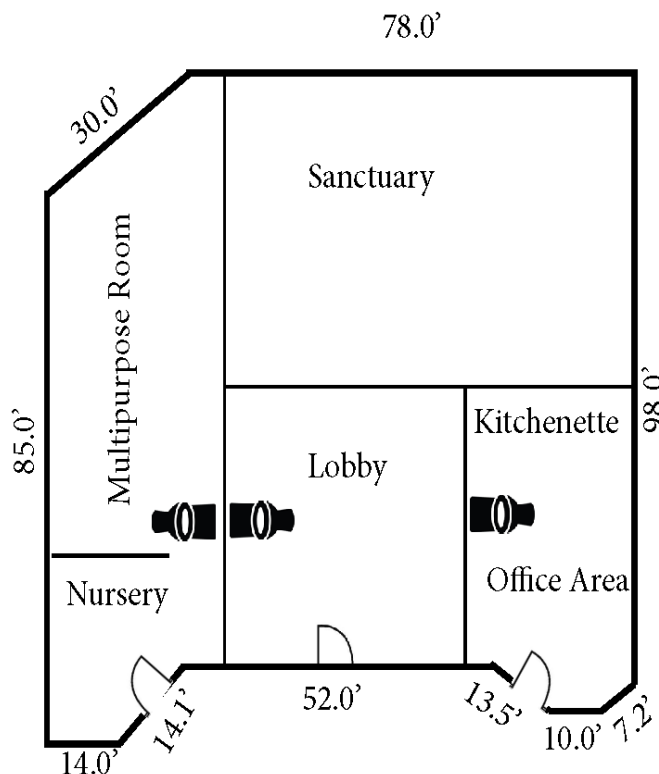
SAN DIEGO COMMERCIAL

TIM CLEPPER - PRESIDENT
380 S. MELROSE DR., SUITE 367, VISTA, CA 92081
TIM@SANDIEGOCOMMERCIAL.INFO
WWW.SANDIEGOCOMMERCIAL.INFO
CA BROKER LICENSE: 01354303
C: 760.402.4846 T: 760.599.4200 F: 760.599.4344

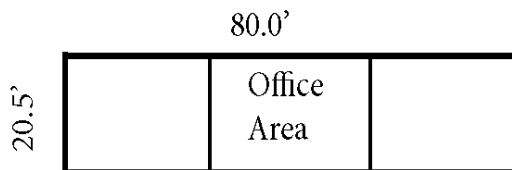
PRELIMINARY ANNOUNCEMENT FOR SALE OR LEASE

2135 INDUSTRIAL COURT, VISTA, CA

First Floor



Second Floor



CONTACT BROKER FOR SALE PRICE
LEASE RATE - \$12,500 NNN PER MONTH

SAN DIEGO COMMERCIAL

TIM CLEPPER - PRESIDENT
380 S. MELROSE DR., SUITE 367, VISTA, CA 92081
TIM@SANDIEGOCOMMERCIAL.INFO
WWW.SANDIEGOCOMMERCIAL.INFO
CA BROKER LICENSE: 01354303
C: 760.402.4846 T: 760.599.4200 F: 760.599.4344