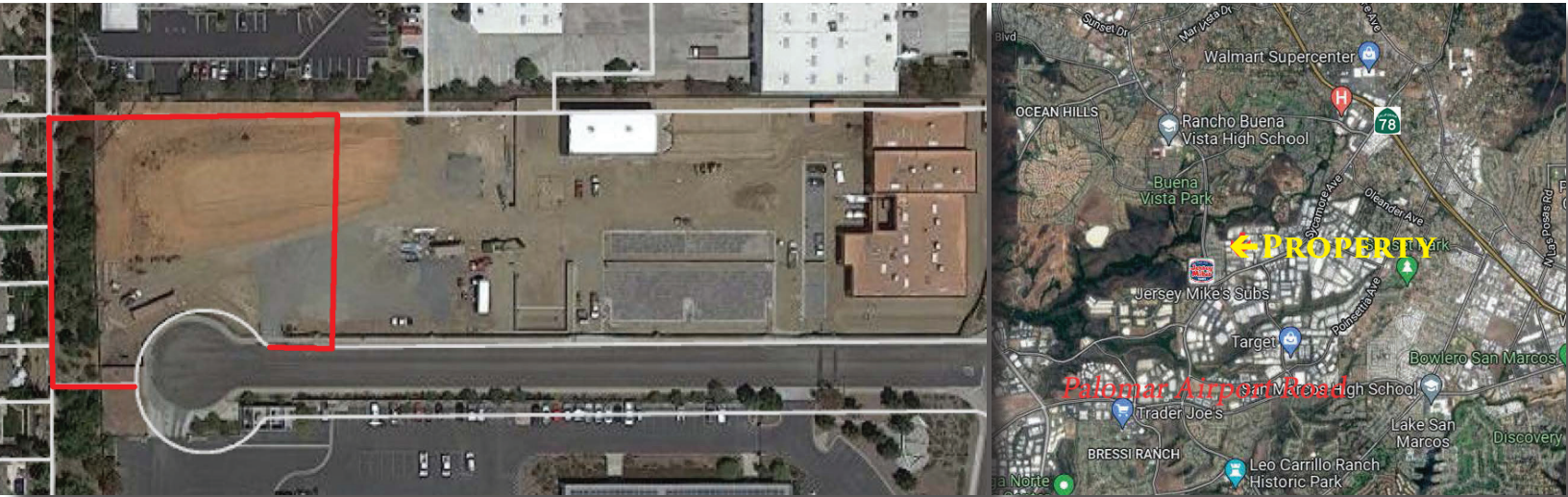


FOR SALE M1 ZONED LAND

1 ACRE AT PIPELINE DR., VISTA, CA



PROPERTY FEATURES:

- An Approximate 1 Acre Parcel of Land
- Owner Will Complete a Lot Line Adjustment and Stub Utilities (Water, Sewer & Electric) To Site
- Rare M1 Zoning Allows For A Wide Variety of Heavier Industrial Uses To Include: Outside Storage of Trucks, Equipment and Materials
- Property Fully Fenced and Gated with Entrance From a Cul-De-Sac
- Terrific Access to 78 Freeway and Interstate 5 From Palomar Airport Road
- Currently Unpaved

SALE PRICE: \$2,300,000

SITE TOUR AVAILABLE WITH APPOINTMENT

SAN DIEGO COMMERCIAL

TIM CLEPPER - PRESIDENT
380 S. MELROSE DR., SUITE 367, VISTA, CA 92081
TIM@SANDIEGOCOMMERCIAL.INFO
WWW.SANDIEGOCOMMERCIAL.INFO
CA BROKER #: 01354303
C: 760.402.4846 T: 760.599.4200 F: 760.599.4344