

FOR LEASE

6189 EL CAMINO REAL, SUITE 201, CARLSBAD CA



PROPERTY DETAILS

- An Approximate 3,800 SF High Image Office Space
- Located Directly Off El Camino Real with Close Proximity to Interstate 5
- Large Corporate Neighboring Firms
- Space Includes Reception, Conference Room, Private Restrooms, and 11 Private Offices
- Extensive Glasslines
- Pre-Wired Phone & Internet

LEASE RATE - \$1.25 PSF/MONTH/GROSS

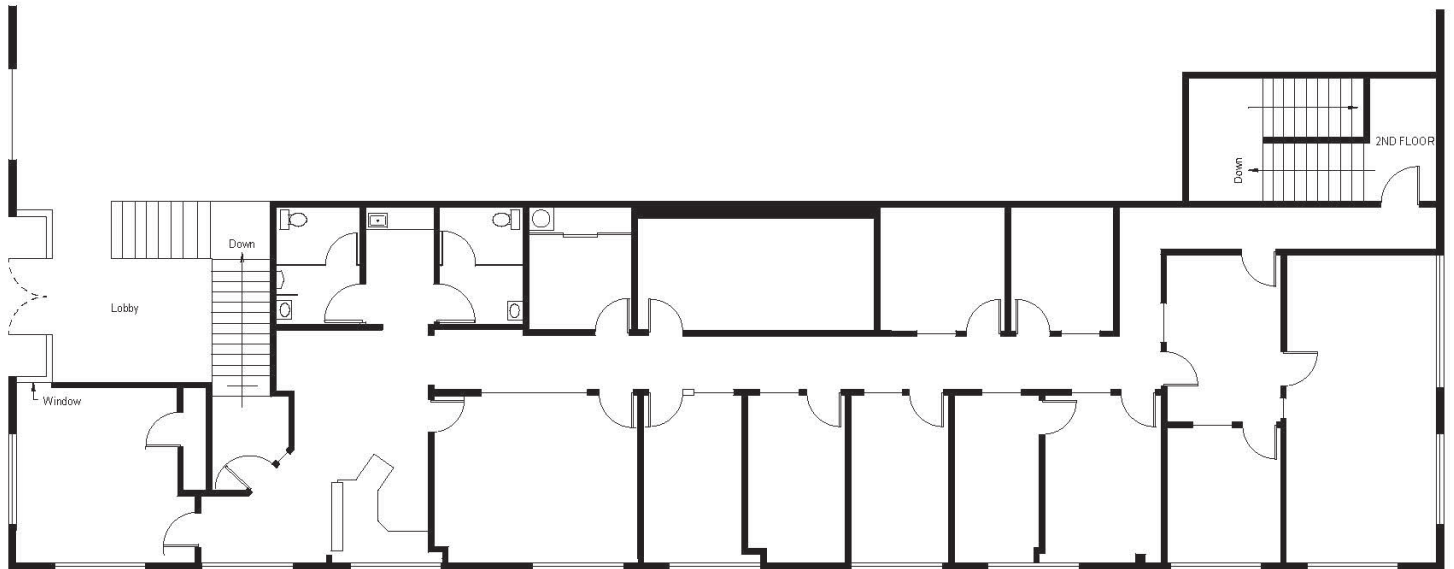
SAN DIEGO COMMERCIAL

TIM CLEPPER - PRESIDENT
380 S. MELROSE DR., SUITE 367, VISTA, CA 92081
TIM@SANDIEGOCOMMERCIAL.INFO WWW.SANDIEGOCOMMERCIAL.INFO
CA BROKER #: 01354303
C: 760.402.4846 T: 760.599.4200 F: 760.599.4344

FOR LEASE

6189 EL CAMINO REAL, SUITE 201, CARLSBAD CA

FLOOR PLAN



LEASE RATE - \$1.25 PSF/MONTH/GROSS

SAN DIEGO COMMERCIAL

TIM CLEPPER - PRESIDENT
380 S. MELROSE DR., SUITE 367, VISTA, CA 92081
TIM@SANDIEGOCOMMERCIAL.INFO WWW.SANDIEGOCOMMERCIAL.INFO
CA BROKER #: 01354303
C: 760.402.4846 T: 760.599.4200 F: 760.599.4344