

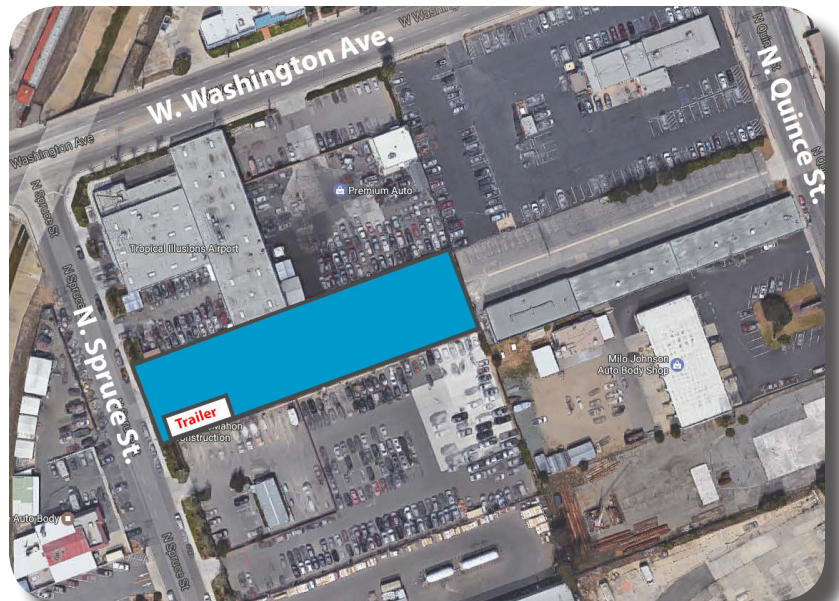
JUST LEASED

540 N. SPRUCE ST., ESCONDIDO, CA



PROPERTY DETAILS

- An Approximate 100 x 110 SF Lot
- Permitted Office Trailer with Electric, Water and Sewer with Shared Access
- Fully Paved and Fenced
- Terrific Access to 78 Freeway & Interstate 15
- Rare M-1 Zoning Allows for a Wide Variety of Uses to Include Outside Storage of Vehicles, Materials and Equipment. Heavy Equipment Sales and Leasing Permitted.
- Represented Landlord



LEASE RATE - \$2,640 PER MONTH GROSS

SAN DIEGO COMMERCIAL

TIM CLEPPER - PRESIDENT
380 S. MELROSE DR., SUITE 367, VISTA, CA 92081
TIM@SANDIEGOCOMMERCIAL.INFO
WWW.SANDIEGOCOMMERCIAL.INFO
CA BROKER #: 01354303
C: 760.402.4846 T: 760.599.4200 F: 760.599.4344