

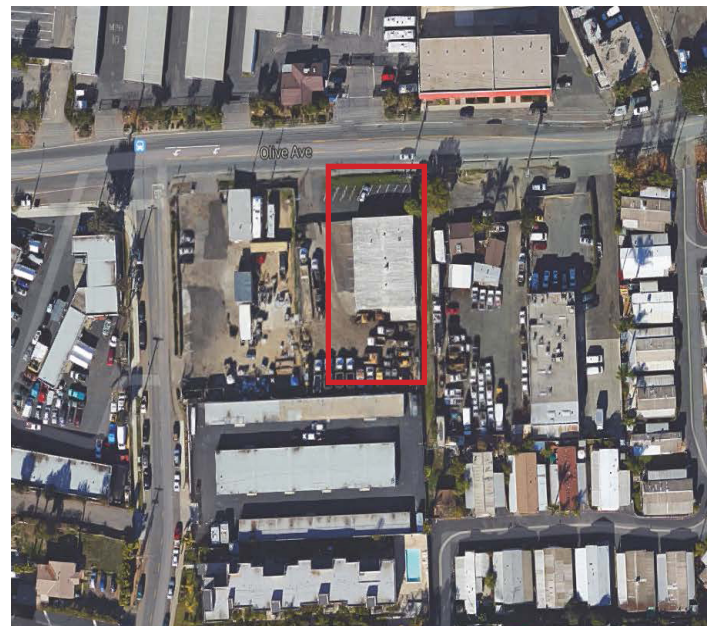
JUST LEASED

420 OLIVE AVE. - VISTA, CA



PROPERTY DETAILS

- Approximate 5,484 SF Industrial Building on a 25,000 SF Lot
- 1,000 SF Office (3 Restrooms, 2 Offices, Bullpen, Reception)
- Paved Fenced Lot for Secured Parking/Yard
- Close Proximity to Highway 78
- Located Site and Negotiated Transaction in Just a Few Weeks
- Represented Tenant



SAN DIEGO COMMERCIAL

TIM CLEPPER - PRESIDENT
380 S. MELROSE DR., SUITE 367, VISTA, CA 92081
TIM@SANDIEGOCOMMERCIAL.INFO
WWW.SANDIEGOCOMMERCIAL.INFO
CA BRE BROKER LICENSE: 01354303
C: 760.402.4846 T: 760.599.4200 F: 760.599.4344